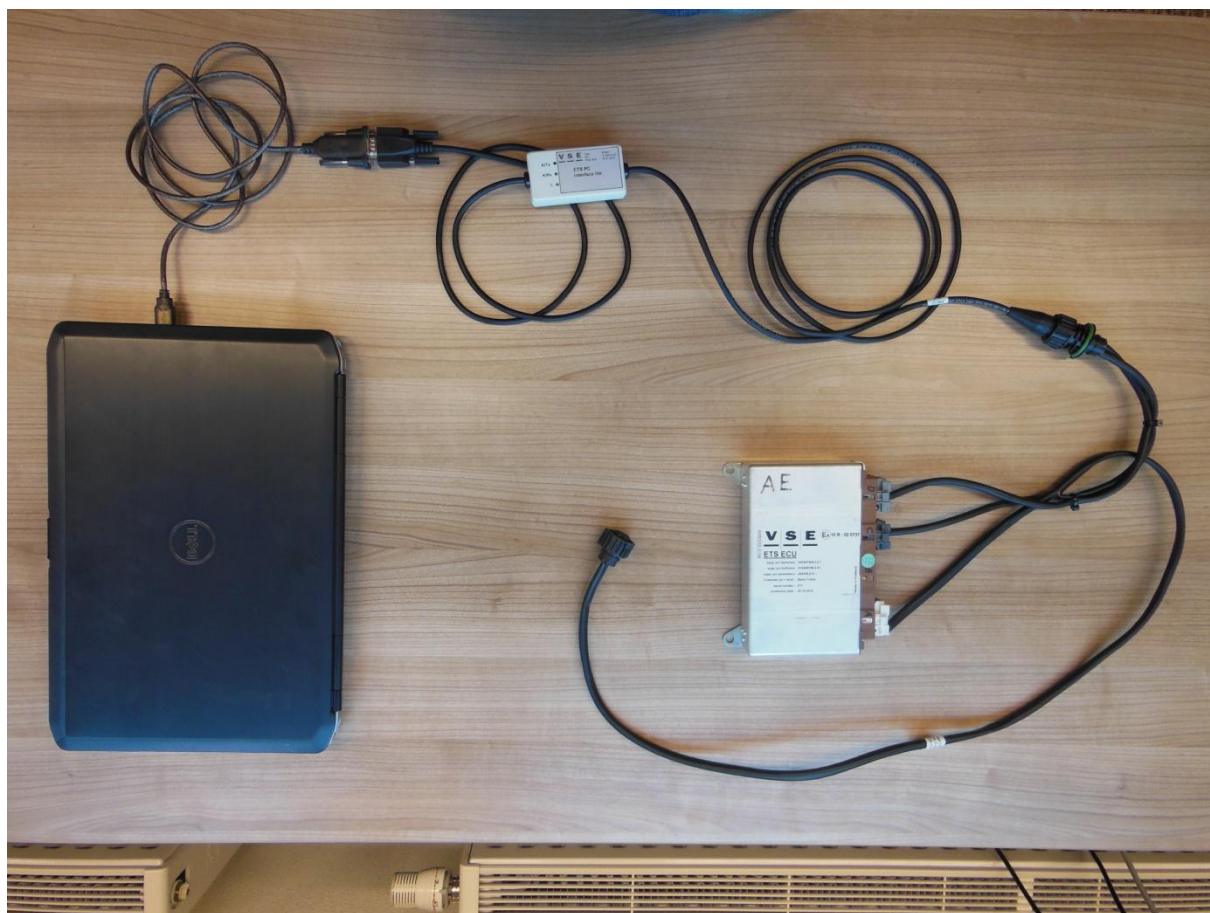


ETS STEERING

Manual download software in VSE ECU



V | S | E



V.S.E. Vehicle Systems Engineering B.V.

Ravelijn 2
NL-3905 NV Veenendaal
The Netherlands
T +31 (0) 318 545744
F +31 (0) 318 545799

Sales:

T +31 (0) 318 545796
sales@v-s-e.nl

Parts:

T +31 (0) 318 545745
parts@v-s-e.nl

Service:

T +31 (0) 318 545745
aftersales@v-s-e.nl

Revision history

No.	Status	Date	Author	Change
01.A		19.12.2013	JBS	initial release

Released by	Date

In the interest of continuous product development V.S.E. Vehicle Systems Engineering B.V. reserves the right to make changes to its systems and products at any time without prior notice.

© Copyright V.S.E. Vehicle Systems Engineering B.V., Veenendaal, The Netherlands

No part of this publication may be reproduced or transmitted in any form or by any means, including printing, photocopying and microfilm, without the prior written permission of V.S.E. Vehicle Systems Engineering B.V.

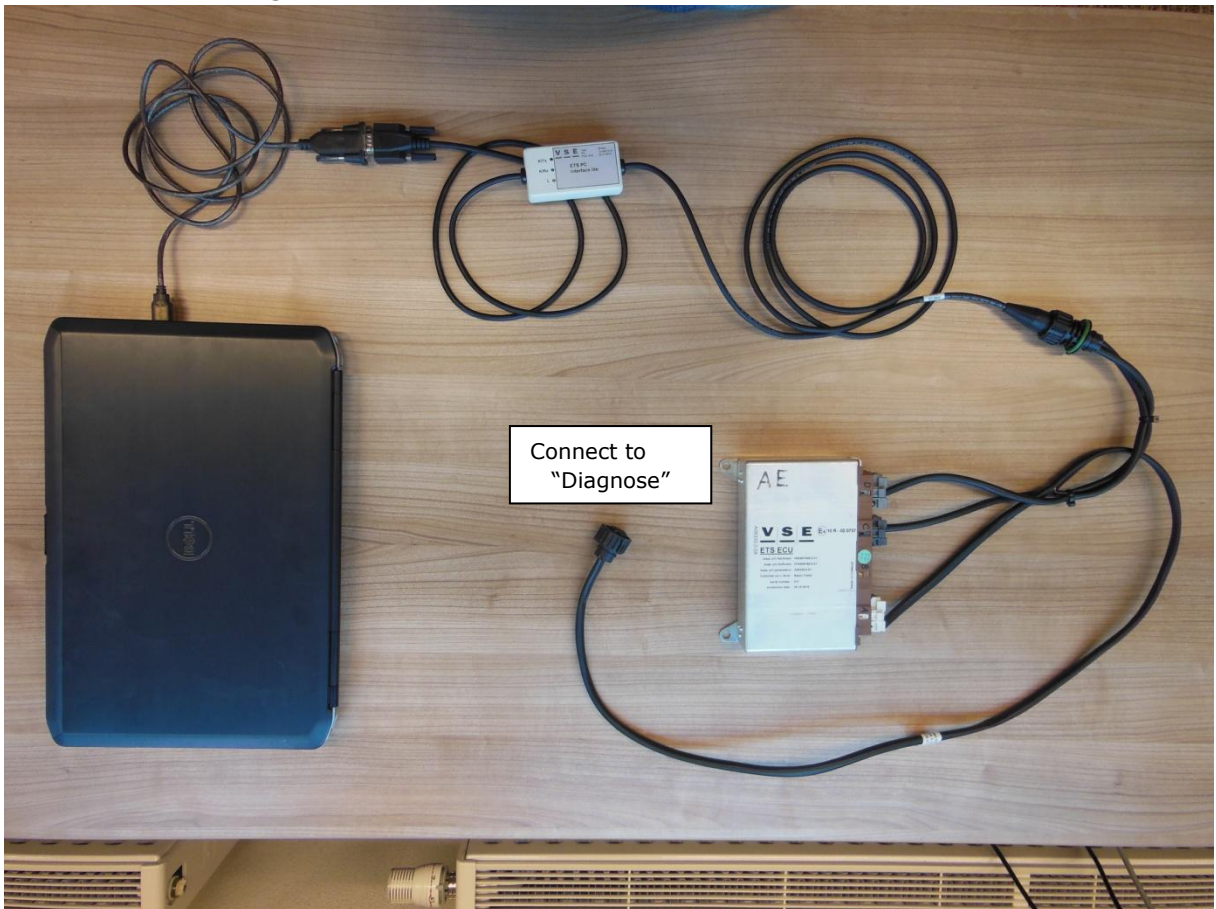
Preface

This document is a guide for downloading software in a VSE ECU (Electronic Control Unit) using a dedicated VSE download tool.



This documentation also contains references to other documents, such as specifications, manuals, diagrams, etc. These documents can be found on your personal login page on our website www.v-s-e.com. These documents are marked with this symbol.

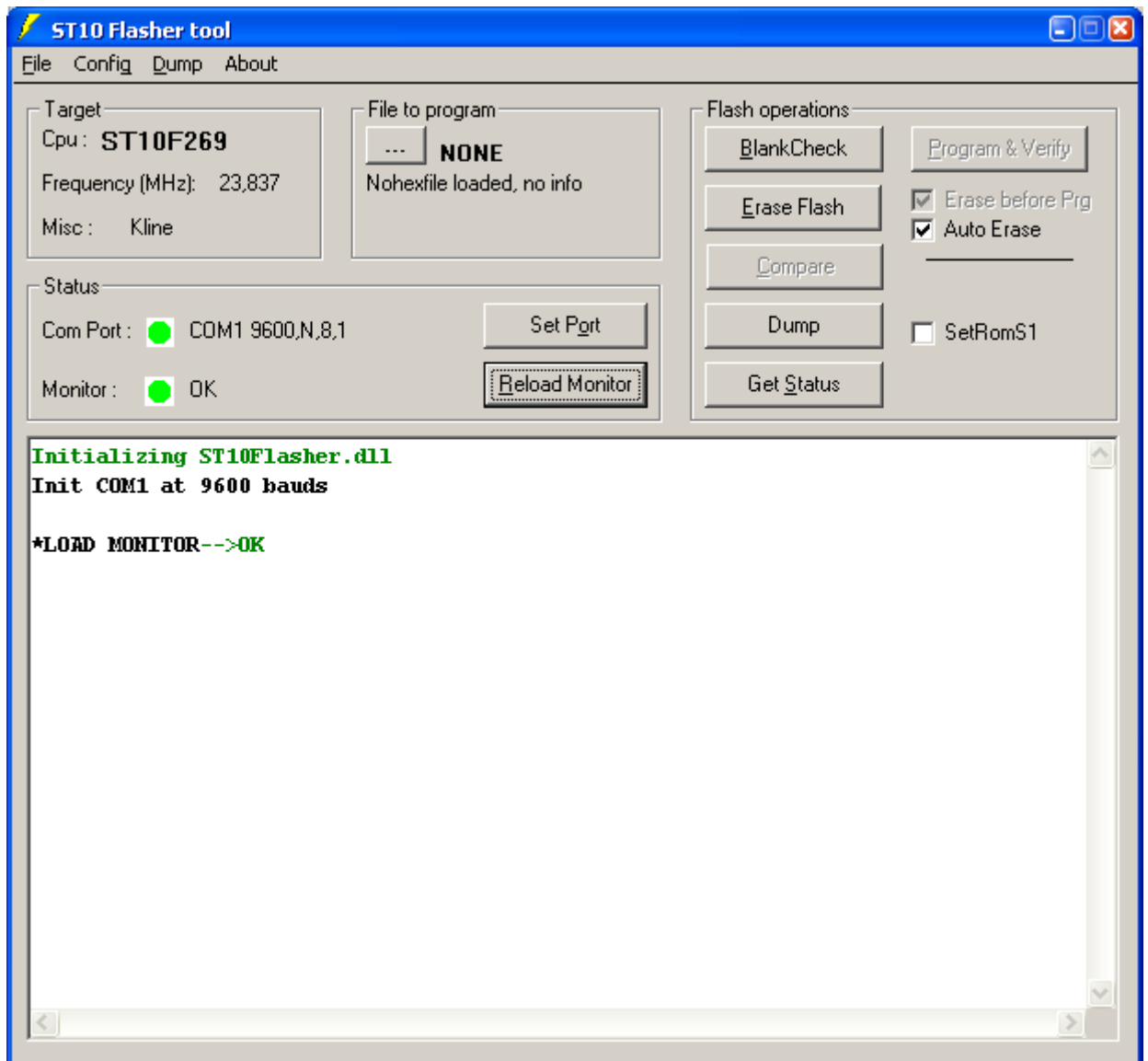
1. Plug the USB-converter cable in your computer and install it. You also received a CD-ROM with the cable.
2. Change the COM-port number of your USB-connector from your computer in COM1 or COM2 or COM3 or COM4 (always use the same USB port on your computer! You cannot use another port) You can use the following link to change the COM port number: <http://www.reslers.de/IBUS/port.html>
3. Install ST10 Flasher. 🏠
4. Connect the parts and wires as shown in picture 1.
The 4-pin DIN connector in the middle of the picture must be connected to the connection "Diagnose" inside the ETS locker.



Picture 1: connecting parts

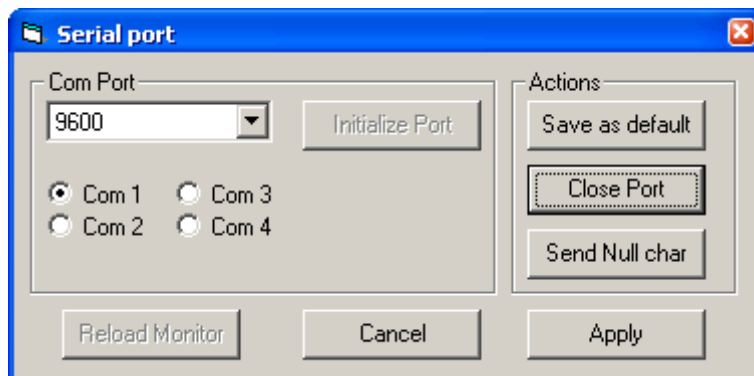
5. Make sure the trailer has ignition power

6. Start the ST10 flasher program; the main dialog box opens (picture 2).



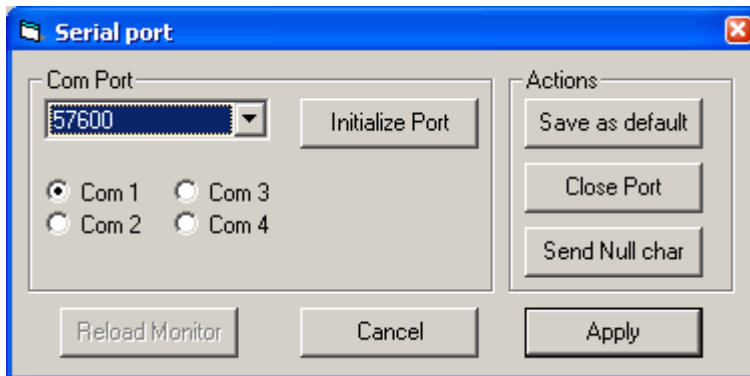
Picture 2: main dialog box

7. Click on "Set Port"; the serial port dialog box opens (picture 3).



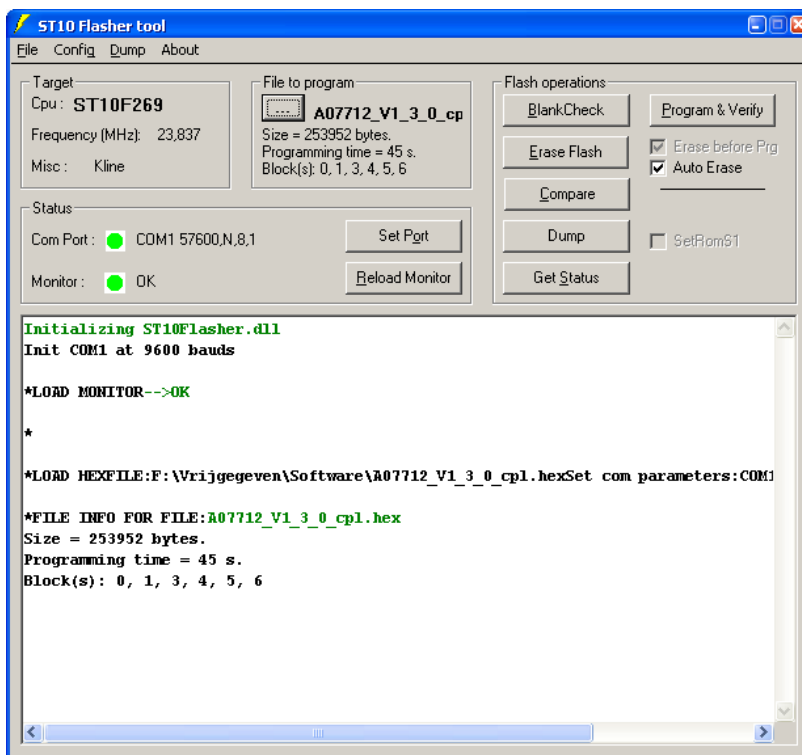
Picture 3: serial port

8. Select the COM-port where you connected the USB-Serial convertor. COM1 or 2 or 3 or 4 . Always the same port.
9. Change the COM-port speed in 57600 and click Apply.



Picture 4: change port speed

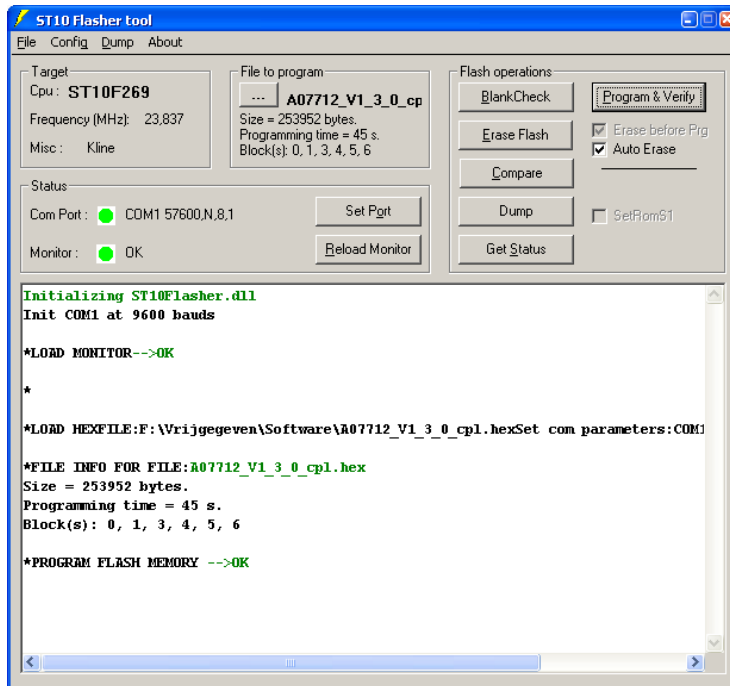
10. Click in the main screen on RELOAD MONITOR.
11. Both status control lights (COM PORT and MONITOR) should be green (picture 4).



12. Picture 4: green lights

13. Select in the main screen "FILE TO PROGRAM" and choose the .hex file you want to load in the ECU.

14. Click on "PROGRAM & VERIFY" to download the software to the ECU.

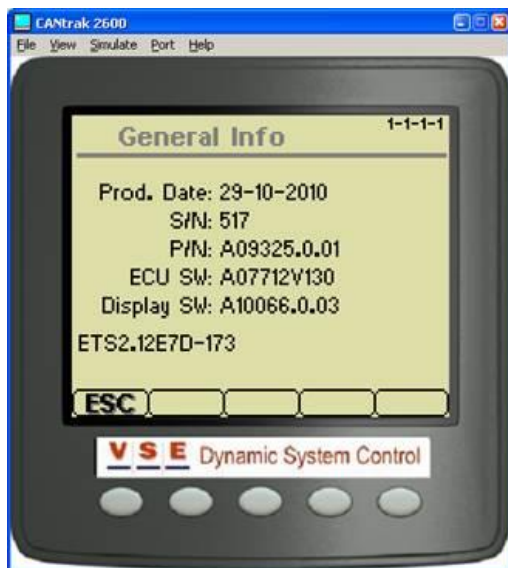


Picture 5.

15. At the end you will see PROGRAM "FLASH MEMORY OK" (picture 5)

16. The software is now loaded in the ECU.

17. Check you installed the right software with the Diagnose Display (picture 6). Go to MAIN MENU > ECU INFO > GENERAL INFO, behind *ECU SW*: you should see the software you installed.



Picture 6: Diagnose display